

LA PLAZA  
CULTURAL

SANDBOX











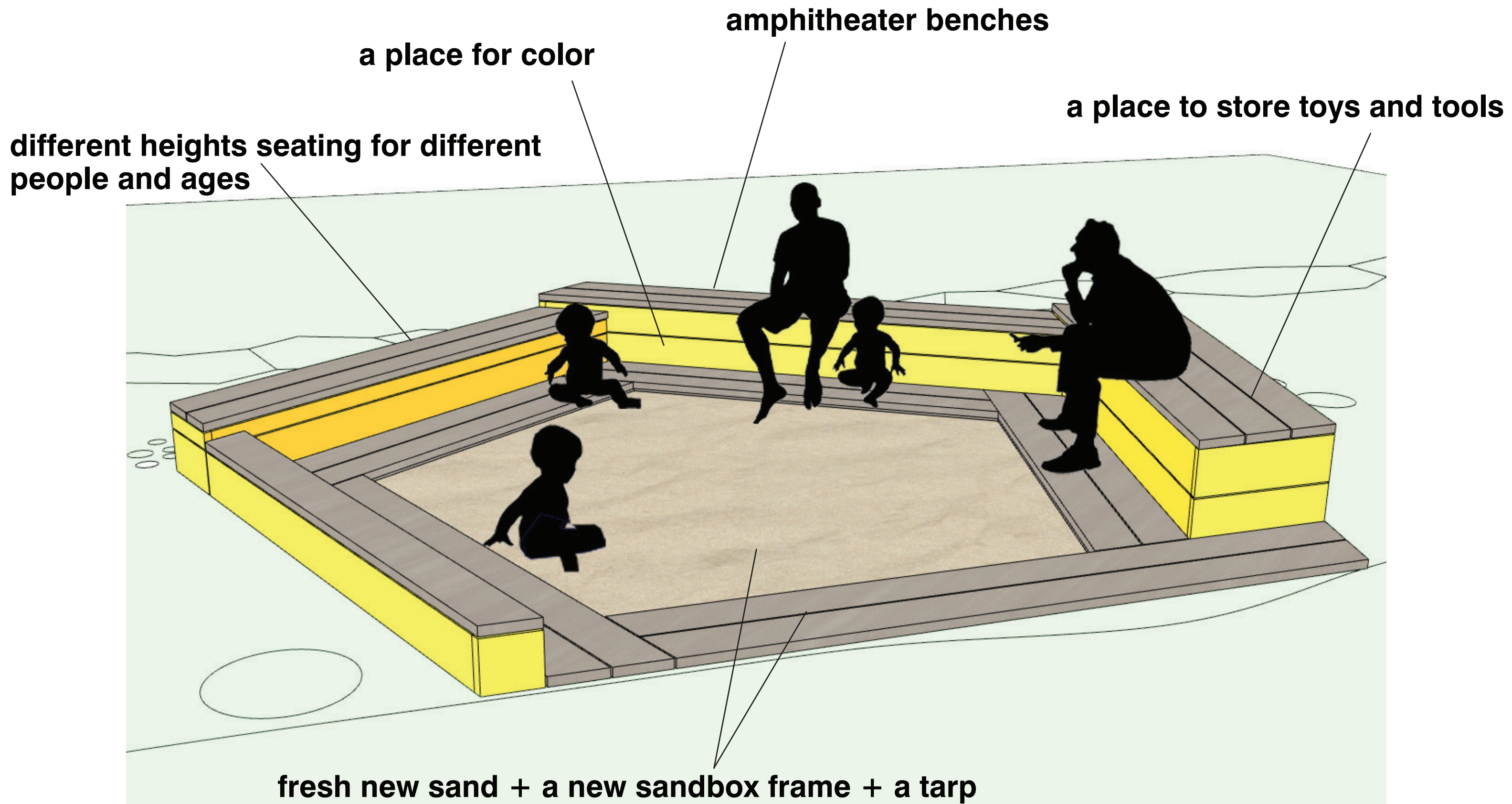


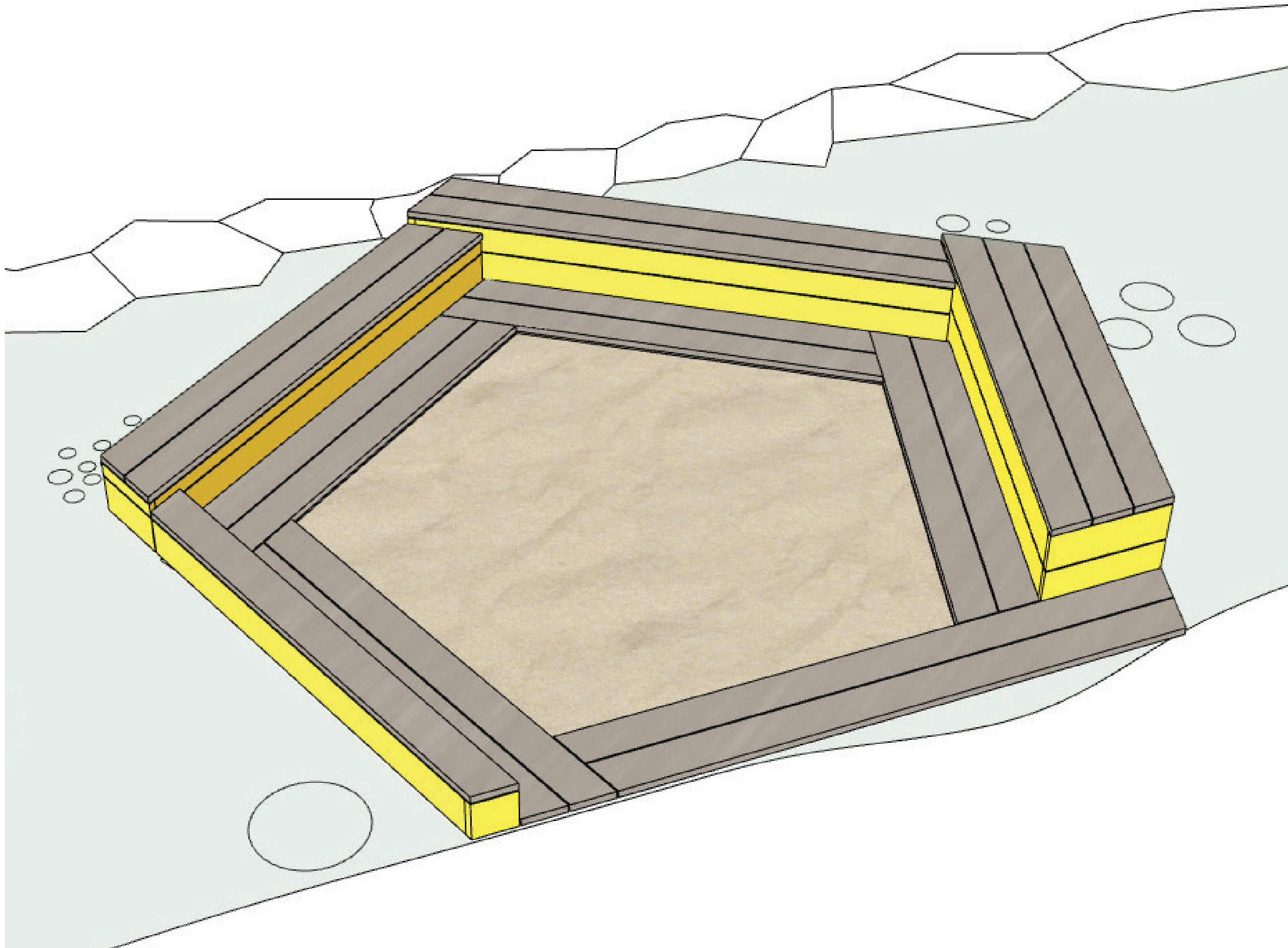




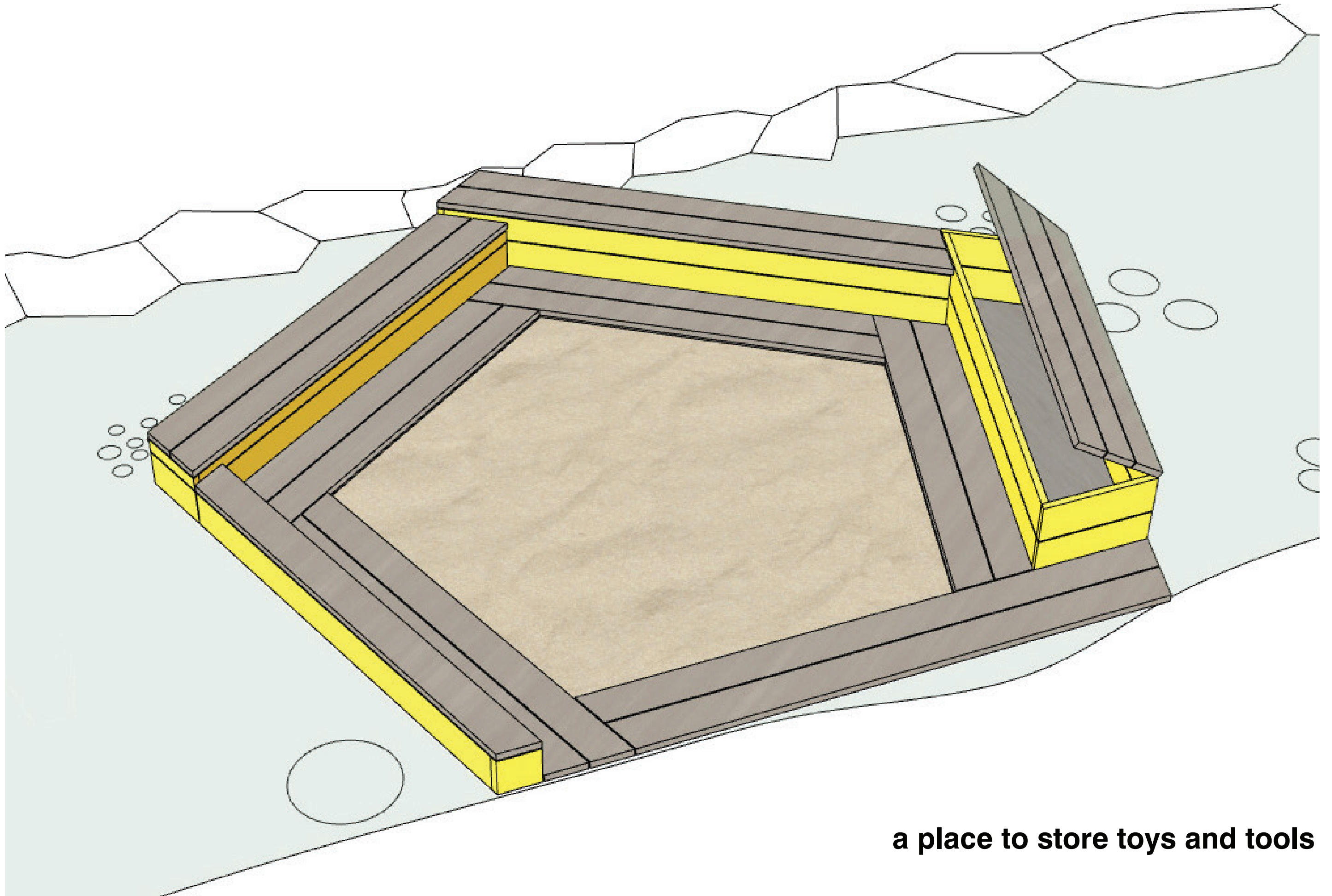


- **amphitheater benches**
- **different-height seating for different people and ages**
- **a place to store tools and toys**
- **a place for color**
- **fresh new sand and new sandbox frame + tarp**
- **all cedar planks**



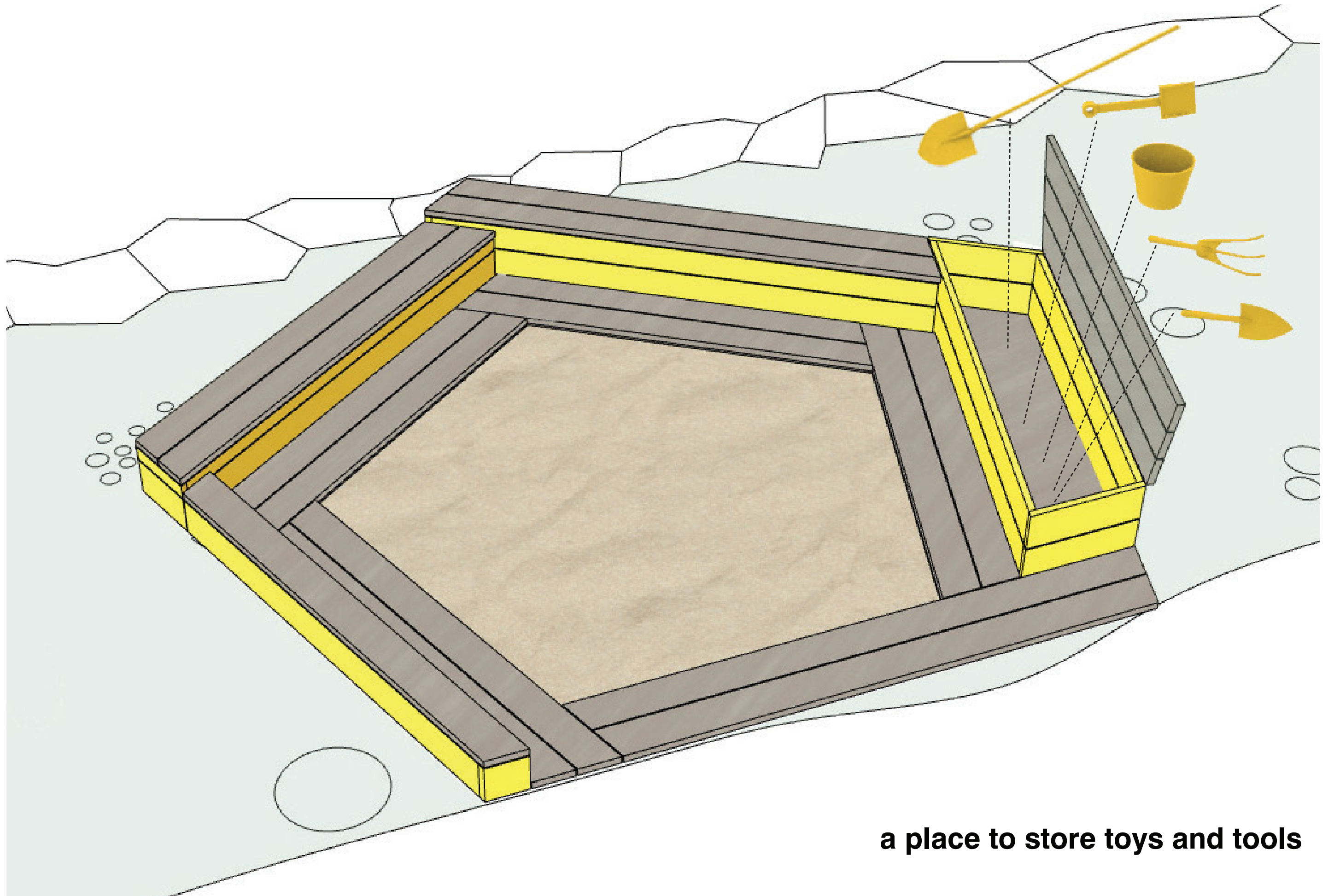






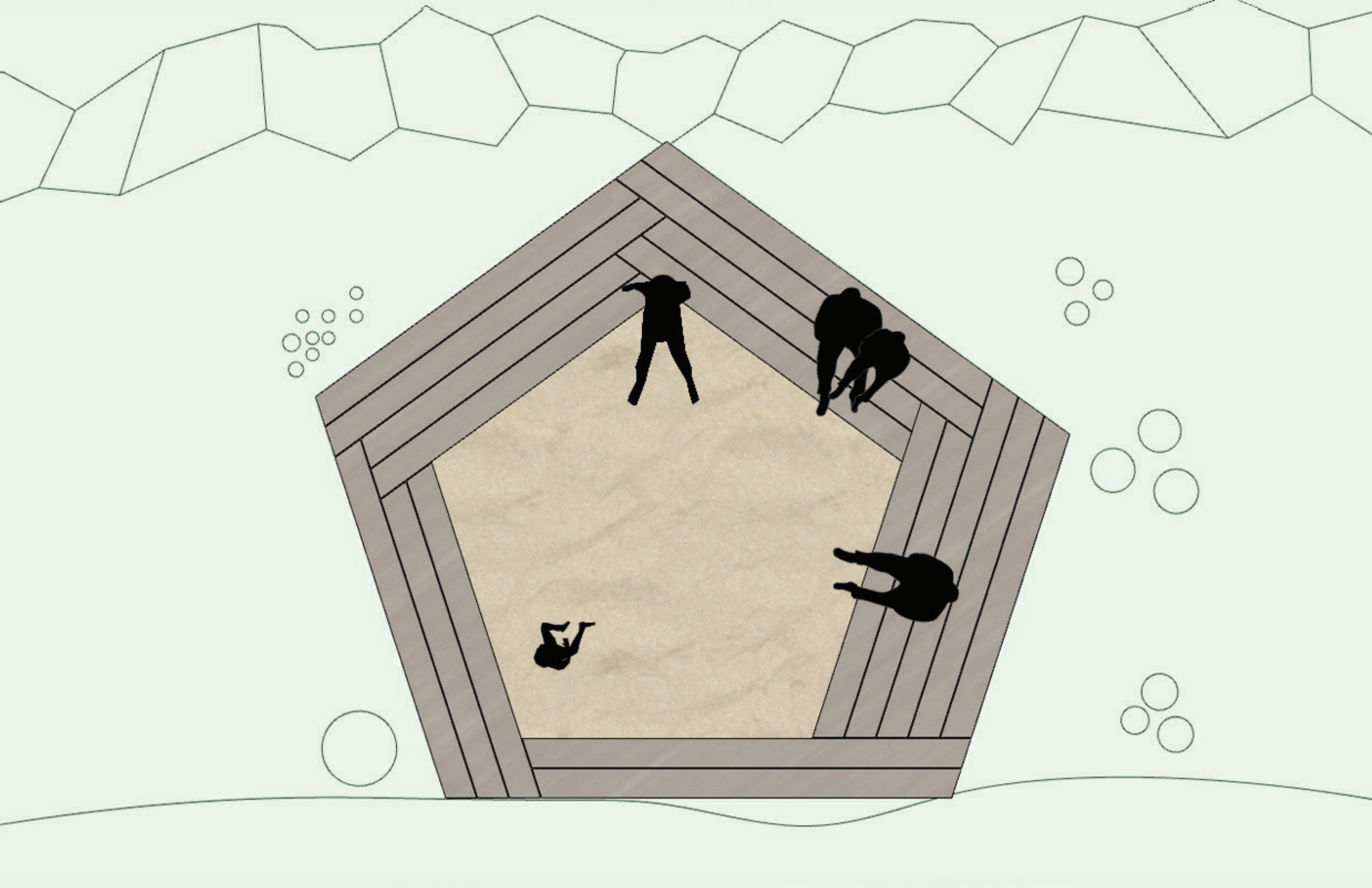
**a place to store toys and tools**



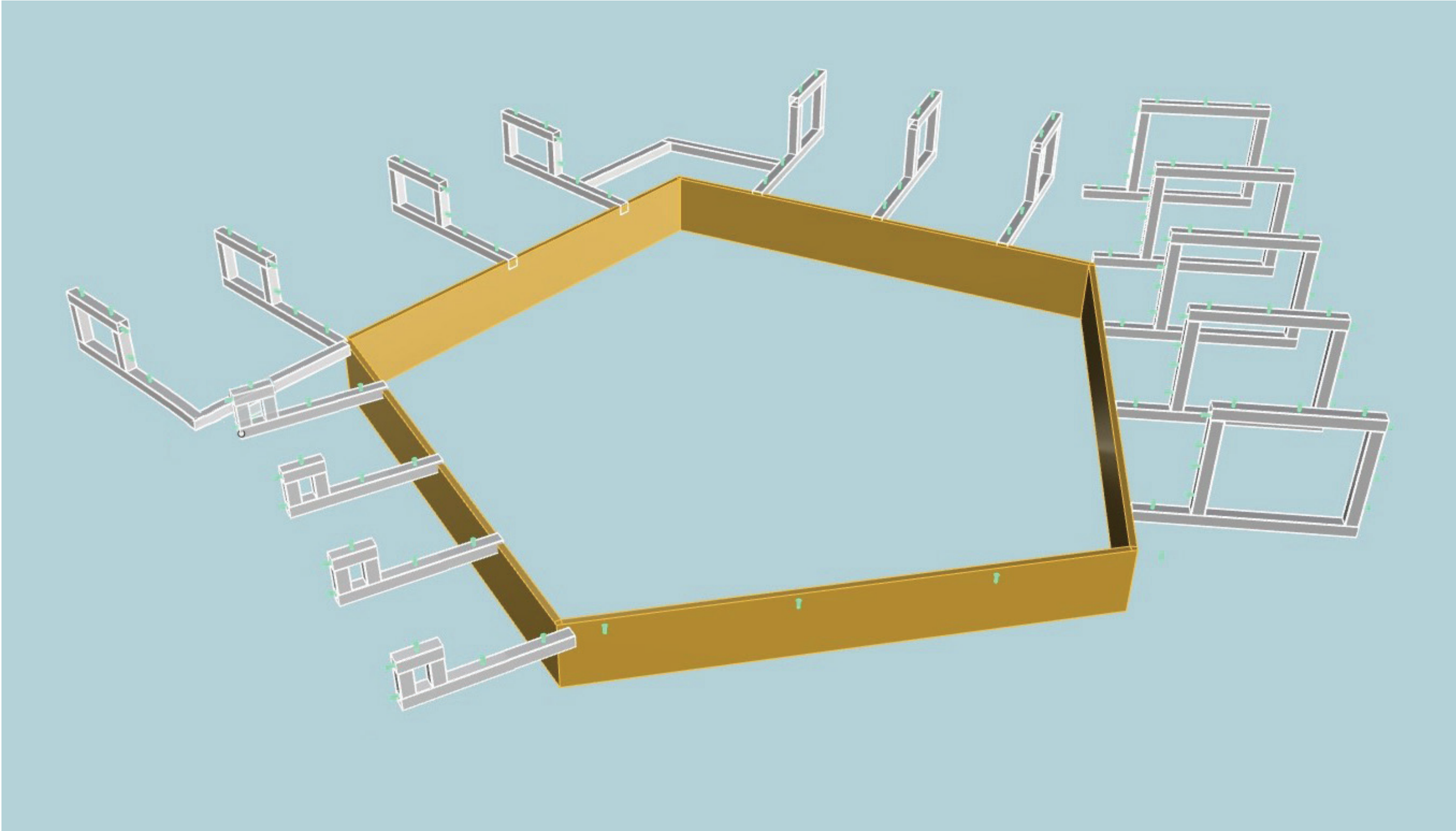


**a place to store toys and tools**









**the steel frame**

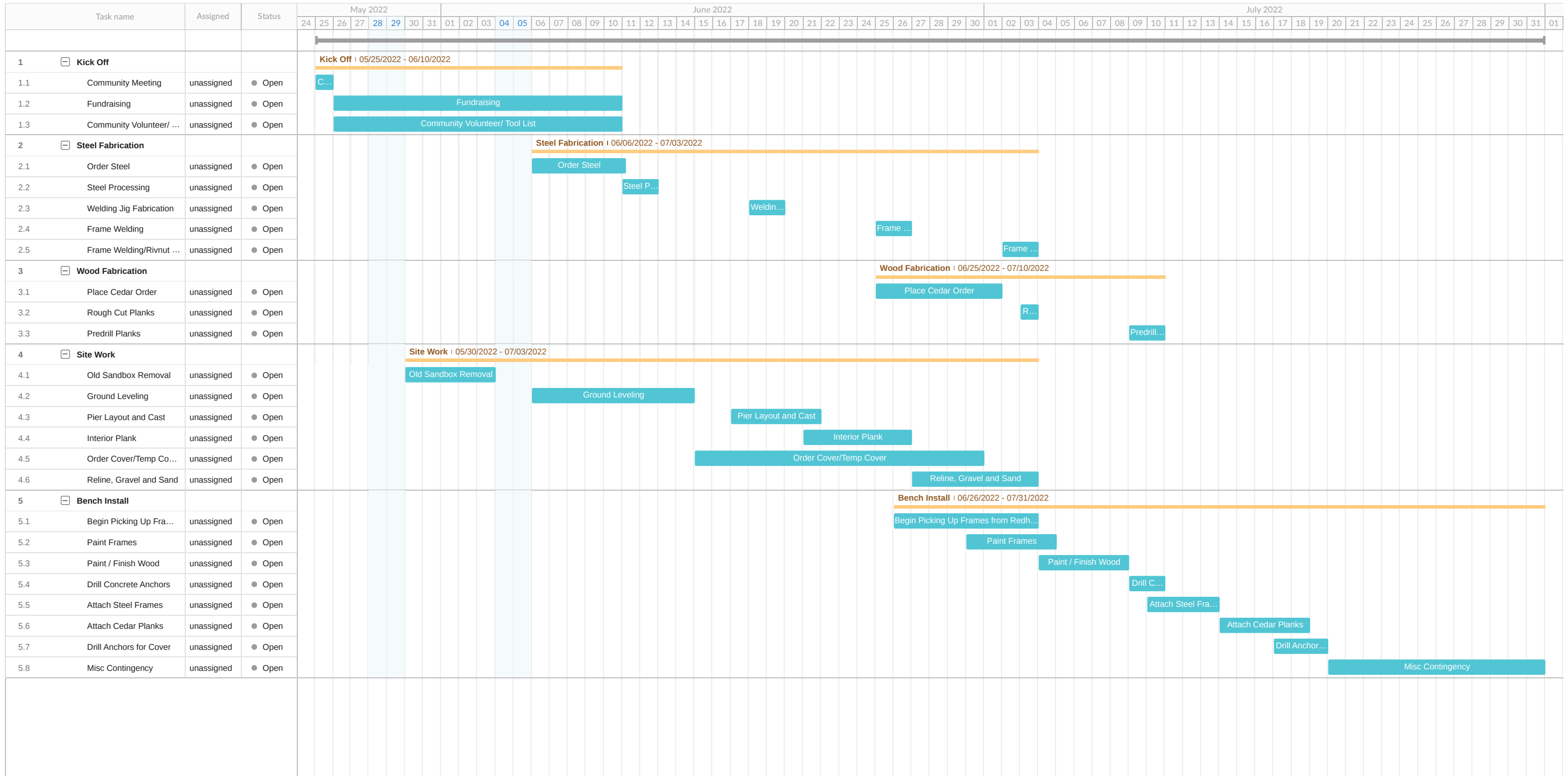


Material	Unit Price	Qty	Cost	
Paint	\$85.00	3	\$255.00	
Gravel	\$19.98	15	\$299.70	6 cubic feet assuming 1" depth
Landscape Fabric/Liner	\$22.98	1	\$22.98	
Cedar	11-13\$	401 BF	\$3,625.00	9-10 LF 8/4 cedar
Steel Tube - 2x2x0.1875	\$1,375.00	1	\$1,375.00	131'
Exterior Grade Titebond	\$27.77	1	\$27.77	
Sand	\$704.00	1	\$704.00	1 pallet @ 32 cubic feet/ +/- 5" depth, industrial wholesale is masonry/concrete sand
Transportation	\$350.00	1	\$350.00	
Wood Sealer	83.98	1	\$83.98	
Old Material Removal?				
Hilti Concrete Anchors	\$30	3	\$90.00	HAS-V-36 ANCHOR ROD
Dominos				Covered
1/4-20 Taps	5.83	5	\$29.15	
Countersink Bits	12.13	2	\$24.26	
Nuts	6.77	6	\$40.62	
Primer	34.89	1	\$34.89	
Masonry Screws	20	1	\$20.00	
Machine screws 1/4-20	6.25	10	\$62.50	
Washers	9.76	6	\$58.56	
Metal Drill Bits	13.53	4	\$54.12	
Allen Keys	7.87	2	\$15.74	
Thread locker	17.62	2	\$35.24	
Shims	2.46	6	\$14.76	
CO2 Welding Gas	150	1	\$151.00	
Welding Wire	85	1	\$86.00	
Tarp	568	1	\$568.00	Quote from <a href="http://mytarp.com">mytarp.com</a> with vinyl coated mesh and grommets
Concrete	5.78	5	\$28.90	
D Rings	12	8	\$96.00	
Tarp Fasteners	8	8	\$64.00	
			\$8,153.17	
Tax				Exempt Attempt
			\$8,153.17	
Contingency				
<b>Total</b>			<b>\$8,153.17</b>	

**budget**



La Plaza Sandbox



schedule





LA PLAZA  
CULTURAL

SANDBOX